

a) If the referral relates to an incident within cricket:

The process for such referrals is as follows:

- Any person at, or connected with, a cricket club should report any concerns they have about the welfare of a child within cricket to their Club Welfare Officer (or in an emergency directly to the children's social care department, police or LADO)
- If a Club Welfare Officer has any concerns, or an incident or concern is reported to them, they must inform the County Welfare Officer, who may refer the matter to the ECB Safeguarding Team
- If the County Welfare Officer or ECB Safeguarding Team is not available, the Club Welfare Officer must avoid delay and seek advice from the local children's social care department, the police, the LADO, or the NSPCC. As soon as possible the Club Welfare Officer must then inform the ECB Safeguarding Team and explain the action taken to date
- The ECB Safeguarding Team will, where appropriate, notify the local statutory agencies or LADO, and investigate the incident if appropriate
- The ECB Safeguarding Team will notify the ECB RMG as required
- The RMG will deal with any media enquiries and decide on any action required to suspend the individual involved, if advised to do so by the children's social care, police or LADO
- A full investigation will be conducted under the ECB Complaints and Disciplinary Procedure on advice from children's social care and/or the police and/or LADO, pending the outcome of any social care or police investigation

What to do if you have concerns



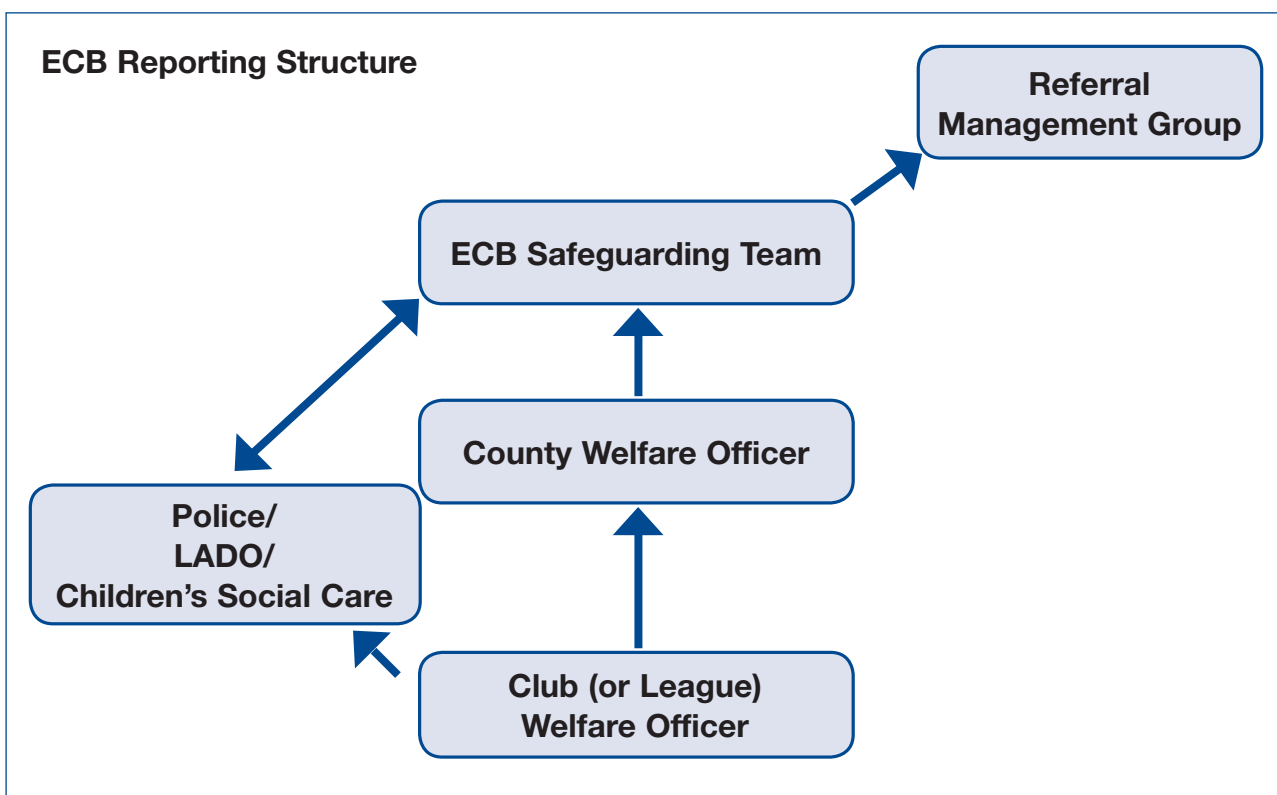
b) If the referral relates to an incident outside cricket:

Any person who has concerns relating to incidents of child abuse or poor parenting skills regarding a parent/carer outside cricket, should advise the Club Welfare Officer. The Club Welfare Officer must then inform the County Welfare Officer, and the County Welfare Officer will then inform the ECB Safeguarding Team.

The ECB Safeguarding Team or the County Welfare Officer will inform the appropriate statutory service i.e. police, children’s social care or LADO.

A record will be kept of the referral and the Safeguarding Team will consider the incident/allegation and its impact or potential impact on cricket and if it is necessary for the RMG to take action to safeguard children, for example through suspension.

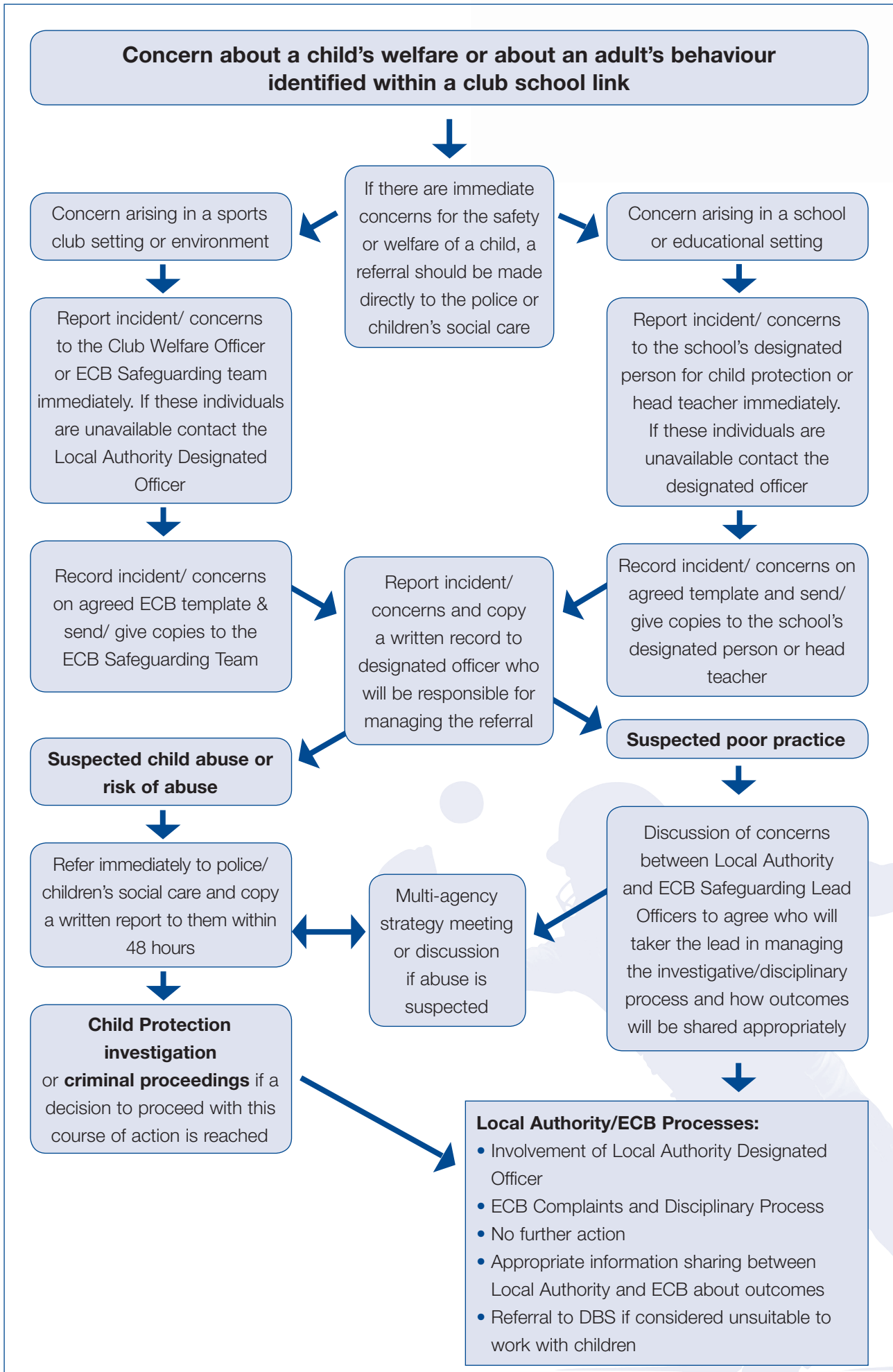
No further action will be taken under ECB procedures unless agreed with or requested by the statutory agencies or until the statutory agencies have completed their enquiries.



Incidents occurring in connection with a club school link

If a club is part of a club school link then a specific reporting structure must be followed for any concerns which arise for activities taking place under that programme.

Details of this reporting structure can be found in the diagrams below, and in such situations, these will over-ride the normal ECB reporting flowchart.



Flowchart for concerns about a child's welfare outside of cricket but involving a child within a club school link

